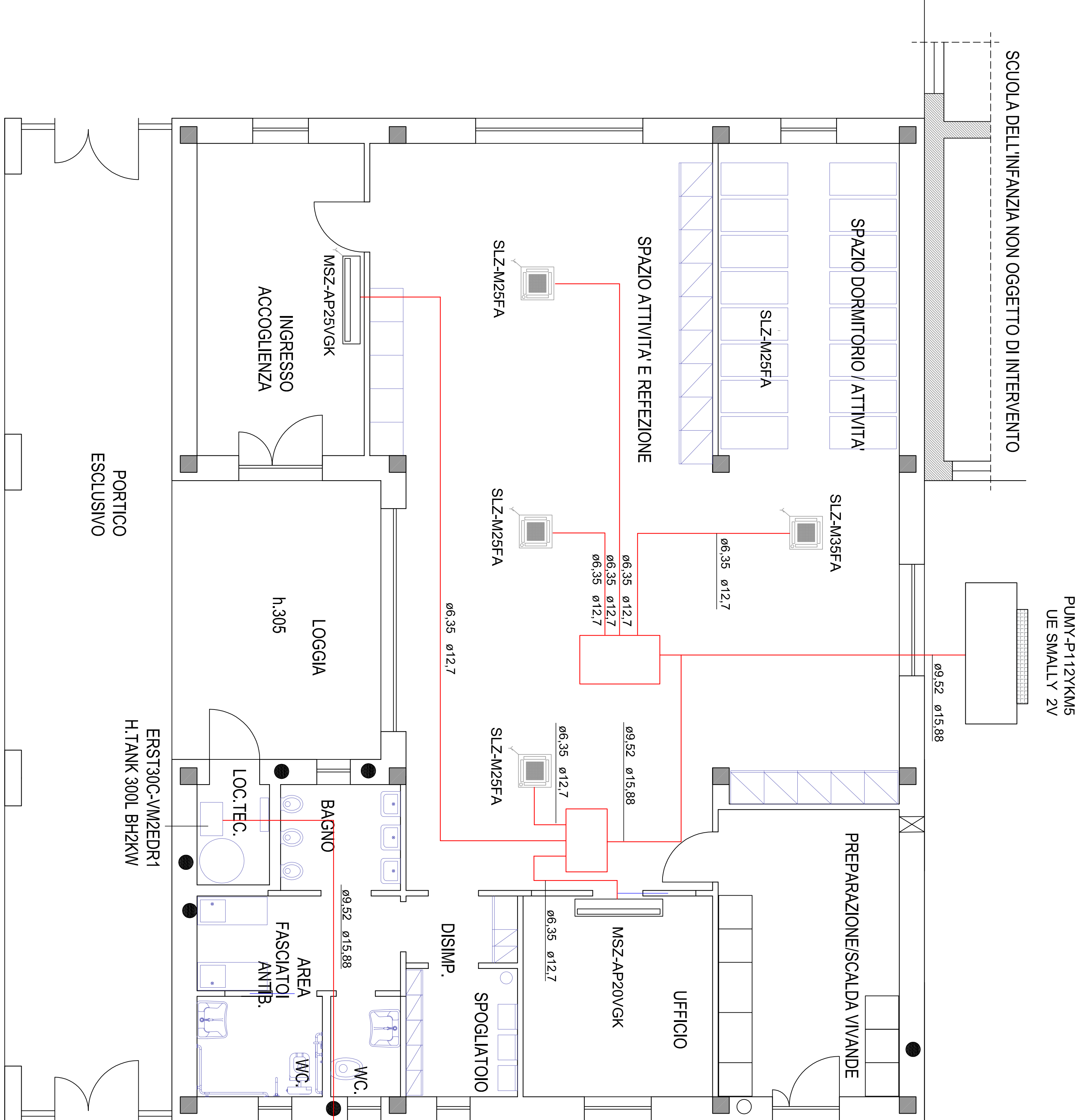


IMPIANTO MECCANICO

FUNZIONALE

MEZZA STAGIONE E STAGIONE ESTIVA



PUMY-P112YKM5
UE SMALLY 2V

MITSUBISHI ELECTRIC
GIUNTO A 7°
MSDD-50A/B-R-E

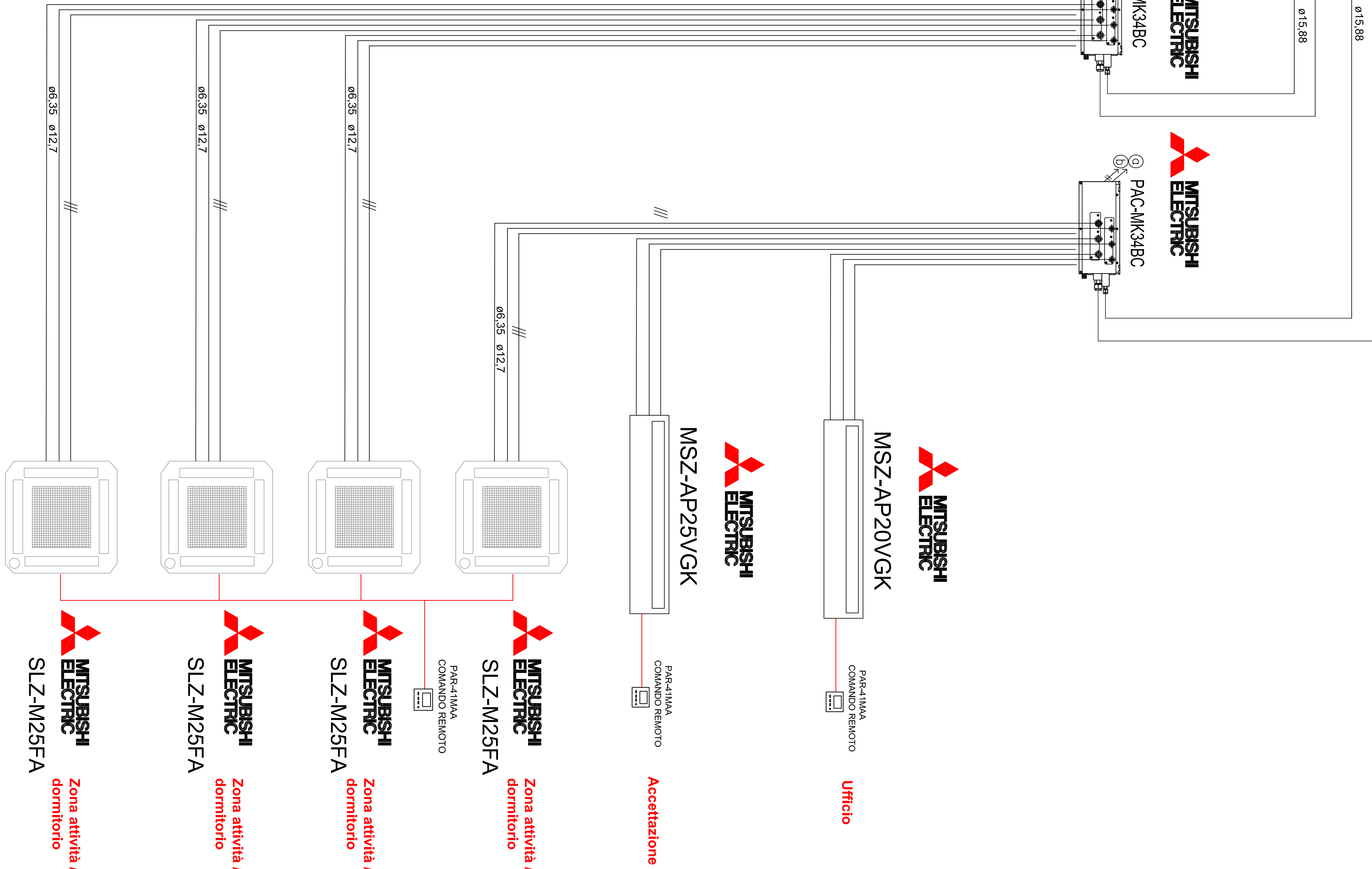
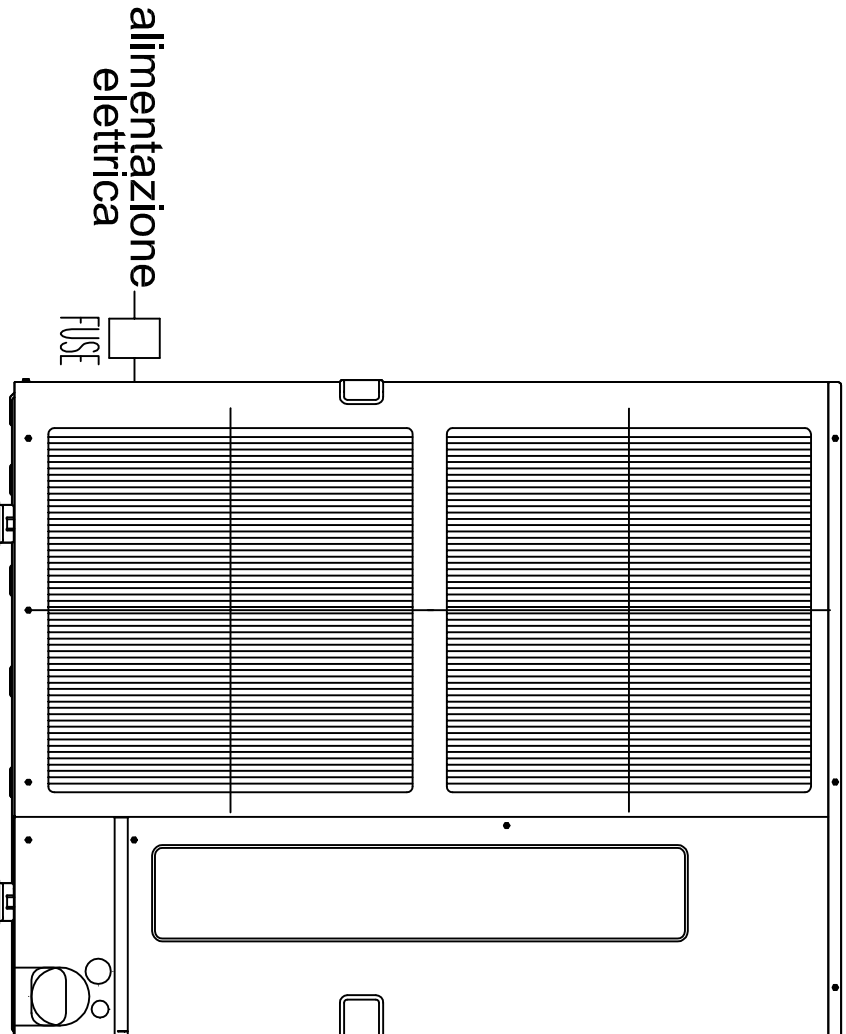
MITSUBISHI ELECTRIC
PAC-MK34BC

MITSUBISHI ELECTRIC
PAC-MK34BC

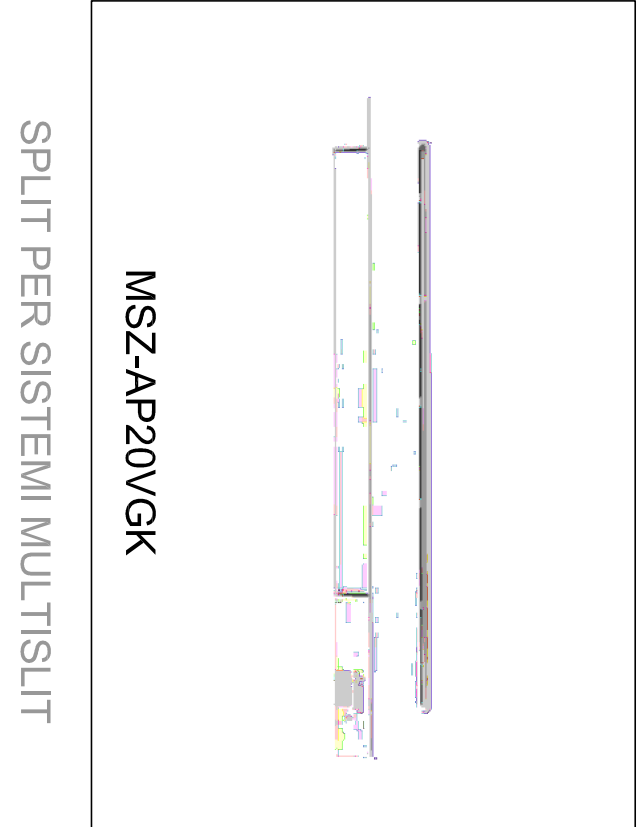
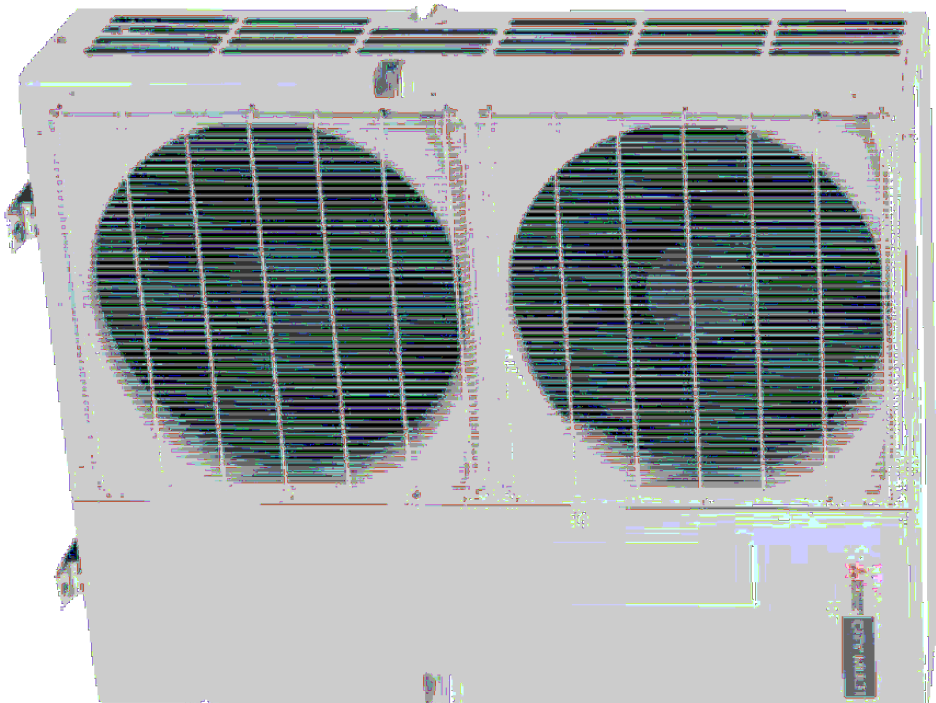
PUHZ-SW100YAA

MITSUBISHI ELECTRIC
PUMY-P112YKM5
UE SMALLY 2V

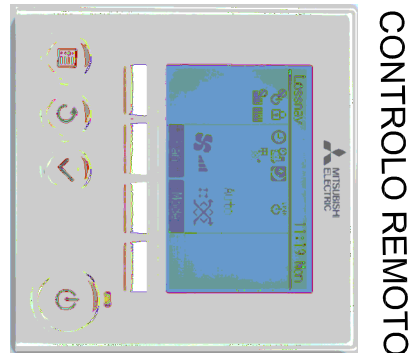
TAOLA	COMUNE DI MONTE CREMASCO	DATA Mag. 21
A	OGGETTO PROGETTO ESECUTIVO REALIZZAZIONE DI NUOVO POLO PER L'INFANZIA CON COSTRUZIONE DI UN NIDO COMUNALE SCHEMI IMPIANTI MECCANICI FUNZIONALE	SCALA
	IL PROGETTISTA DOTT. ING. DANILIO BISLERI	IL PROPRIETARIO:



PUMY-P112YKM5



A CASSETTA IN CONTROSOFITTO 4 VIE



CONTROLLO REMOTO